

# CMweb Job



CMweb URL: <https://cmweb.llnl.gov>  
 NARAC Exercise/Emergency: (925) 424-6465  
 NARAC Customer Support : (925) 422-9159  
 CMHT: 702-734-1665  
 Advisory Team: 866-300-4374

If you need access call NARAC Customer Support (925) 422-9159

Access Help for detailed guidance.

The screenshot shows the CMweb homepage with several callout boxes:

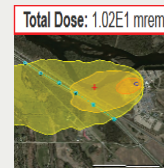
- 1 Mission Planning Tool:** Points to the 'Help' menu item.
- 2 FRMAC Product Request Tool:** Points to the 'FRMAC Requests' menu item.
- 3 10-point /Plume Probe:** Points to the 'Tools' menu item.
- 4 Example Briefing Products:** Points to the 'Guides and Information' section.
- 5 Find NARAC/IMAAC/FRMAC Products:** Points to the 'View' menu item.

Additional callouts include:

- Emergency Support:** A box containing contact information for the DOE Watch Office.
- Notices:** A list of recent notices with dates and times.
- Guides and Information:** A list of various briefing products and guides.
- CM Events:** A list of events such as SOTU 2017, WIPP Response, and Japan Earthquake.
- Exercises:** A list of exercises like Dark Phoenix and Northern Lights 2016.
- Training:** A list of training events including NARAC 150.
- Response Assets:** A list of assets under the FRMAC heading.
- Homework Problems:** A link to quarterly homework problems.
- RAMS:** A link to the Aerial Measuring System (AMS).
- Radiological Assistance Program (RAP)**
- Accident Response Group/Render Safe (ARG)**
- NA-84 HP Working Group**

## 1 Mission Planning Tool

For any NARAC run that contains a dose rate prediction, the Mission Planning Tool allows the user to calculate the dose received due to a monitoring or evacuation strategy.



Mission Planning User Guide under Help

## 2 FRMAC Product Request Tool

Under "FRMAC Requests" select "New Request". Fill out the form in as much detail as possible. The CMHT will review the request and you will receive email notifications. Request add to "View" group to see all requests.



## 3 10-point /Plume Probe

The 10-point tool will present the user with 10 downwind monitoring locations based on wind direction. (See Ten Point Monitoring Guidance under Guides and Information). Plume Probe allows the user to click any location on a plume graphic and get the model predicted value.

## 4 Example Briefing Products:

Briefing Products are meant to assist Subject Matter Experts in briefing decision makers. There are Briefing Product sets for Nuclear Detonations, Radiological Dispersal Devices and Nuclear Power Plants.

There are many Briefing Products and some are used in a time series. Use the product and time that is best applicable to the question.

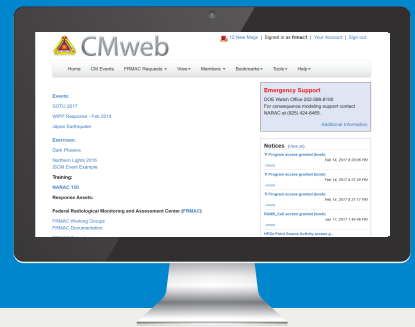
## 5 Find NARAC/IMAAC/FRMAC Products

- View/Search
- Notices
- Events
- Exercises

See page 2 for more detail on finding approved products.

## CM Events

Used to access Approved NARAC Run Product described on page two of this job aid.



CMweb URL: <https://cmweb.llnl.gov>  
 NARAC Exercise/Emergency: (925) 424-6465  
 NARAC Customer Support : (925) 422-9159  
 CMHT: 702-734-1665  
 Advisory Team: 866-300-4374

Access to runs in the NARAC folder may need to be requested from CMHT or NARAC Customer Support.

## Where to find Approved Products:

### 1 Interagency Products and Data

Contains products that have been reviewed and approved for release. These may be NARAC, IMAAC, AMS or FRMAC products and GIS layer information. If you have been given access to other folders with working products in them (NARAC and CMHT are good examples), please treat those products as a work in progress.

The folder structure access is based on the individual or group, not everyone has access to all folders.

**Interagency Products and Data** > USA > CMweb > Events FY2016

Vibrant Response 2016 > Interagency Products...

Description: Location for all final products approved for distribution to the interagency  
 Created: April 28, 2016 16:27:08 UTC  
 Last Modified: April 28, 2016 16:27:09 UTC  
 Creator: pobanz2-usa-mgr

Search  Go Advanced search

▼ New | Share | Rename | Delete | Delete Contents | Move

Name	Type	Owner	Modification Date	Creation Date	State
FRMAC Products	Folder	pobanz2-usa-mgr	May 2, 2016 21:13:29 UTC	Apr 28, 2016 16:27:09 UTC	5 Items

## Where to find additional Reports, Tools and Downloads:

- 1 Click "Mission Planning" to go to the tool.
- 2 Click "Interactive Map" to get the plume probe or 10-point plan.
- 3 Click "Downloads" to download GIS Shape or Google KMZ files.

Events FY2016 > Vibrant Response 2016 > NARAC > VR16 Set 1 - Initial...

Description:  
 Created: April 28, 2016 16:28:51 UTC  
 Last Modified: May 3, 2016 13:36:10 UTC  
 Creator: pobanz2-usa-mgr

Summary Files (1) Measurements (0) Manage

Expires: Never  
 Status: Completed  
 Model: NARAC  
 Material Released: Total Strength: 2.54E8 Ci  
 Release Start Time: May 1, 2016 15:00:00 UTC  
 Release End Time: May 1, 2016 15:00:00 UTC  
 Location: 40.441450 N, 80.002125 W

Mission Planning | Interactive Map | Downloads

Reports Find

- Briefing
- Early Phase
- Intermediate Phase
- Technical

- Consequence Report
- Early Fallout Casualties
- Early Phase Evac Shelter PAGs (12-108 hrs)
- Early Phase TED (0-96 hrs)
- Intermediate Phase Dose
- Intermediate Phase Relocation PAGs
- Prompt Nuclear Detonation Heavy Structure Effects
- Prompt Nuclear Detonation Light Structure Effects
- Prompt Nuclear Detonation Pop. Effects
- Prompt Thermal Effects on Personnel
- Worker Protection Dose Rate at 12 hrs (Far Field)
- Worker Protection Dose Rate at 12 hrs (Near Field)
- BriefProd#1\_Dangerous\_Fallout\_Zone\_TimeSeries
- BriefProd#2\_Hot\_Zone\_TimeSeries
- BriefProd#3\_Damage\_Response\_Zones\_TimeSeries
- BriefProd#4\_Fallout\_Casualties\_TimeSeries
- BriefProd#5\_Prompt\_Casualties

### 2 Consequence Report

Contains technical details including release information, nuclides with mass or activity, particle size, dose factors and meteorology.

### 3 One Page Technical Report

Contains plot integration and valid time, release location, nuclides included, and dose factors. All one page reports are in the consequence report.

### 4 Briefing Products

Contains information for use by Subject Matter Experts in explaining model predictions, including key points and assumptions.

**Predicted Damage Response Zones**  
 Immediate structural damage caused by blast  
 (with overlay of Dangerous Fallout Zone area added for reference)

**Key Points**

- This map shows blast damage, and at least part of the area of high radiation hazard. There is dangerous fallout in this area and possibly beyond the Dangerous Fallout Zone protect for a complete representation.
- Dangerous fallout may be carried in directions other than exposed by surface winds.
- The actual damage areas are not circular, but irregularly shaped, due to the effect of buildings on the blast.
- Severe Damage Zone (formerly No-Go Zone): Practically all structures severely damaged or collapsed. Rubble will make streets and roads impassable. Some survivors possible in stable, adequate structures. Adequate shelter (tunnels, basements...) required to survive prompt radiation and effects of radioactive fallout (see Dangerous Fallout Zone protect).
- Moderate Damage Zone: Substantial damage to most light structures, minor damage to heavy/reinforced structures, most single family dwellings destroyed. Rubble and disabled vehicles will make use of streets difficult to impossible. Many casualties due to flying debris/glass, burns, building collapse and accidents. Urgent medical care required.
- Light Damage Zone: Glass breakage and distorted window/door frames. Note: no damage to reinforced structures. Stalled/crashed vehicles will slow movement of emergency vehicles. Body non-life threatening injuries requiring self/first aid care.